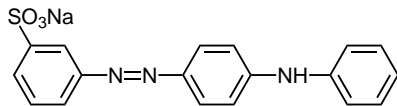
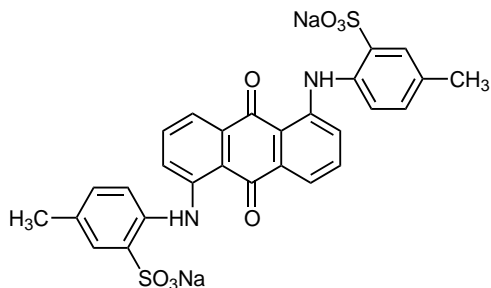


# Some examples of commercial dyes

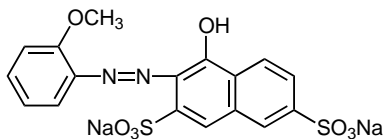
## Acid dyes



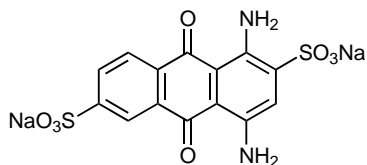
1 CI Acid Yellow 36



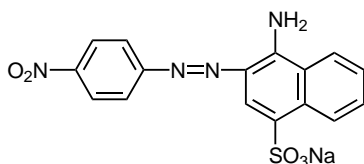
4 CI Acid Violet 34



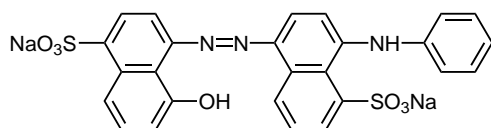
2 CI Acid Red 5



5 CI Acid Blue 56



3 CI Acid Red 74

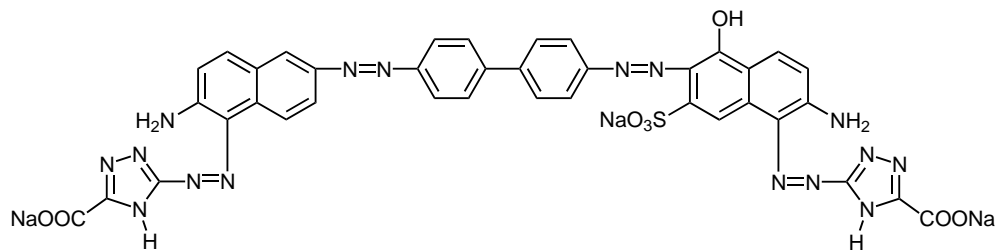


6 CI Acid Blue 135

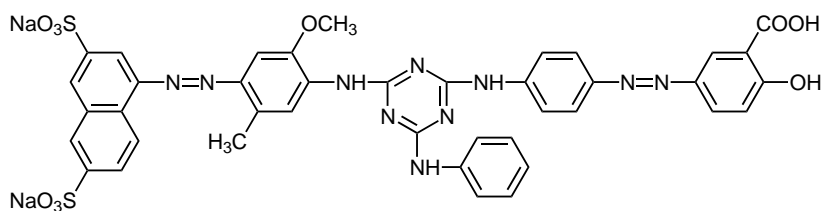


## A1. SOME EXAMPLES OF COMMERCIAL DYES

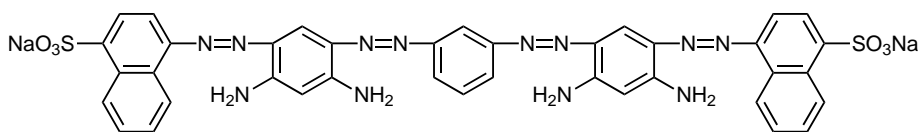
### Direct dyes



7 CI Direct Blue 150

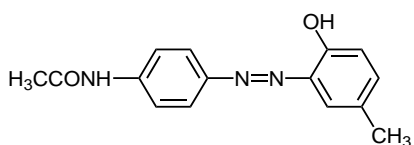


8 CI Direct Green 26

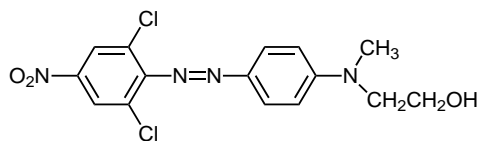


9 CI Direct Brown 44

### Disperse dyes



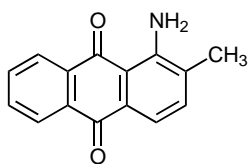
10 CI Disperse Yellow 3



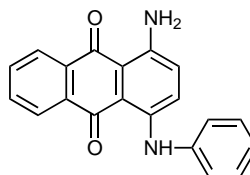
11 CI Disperse Orange 5

  
Contents

  
Home

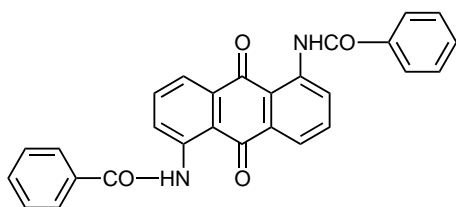


12 CI Disperse Orange 11

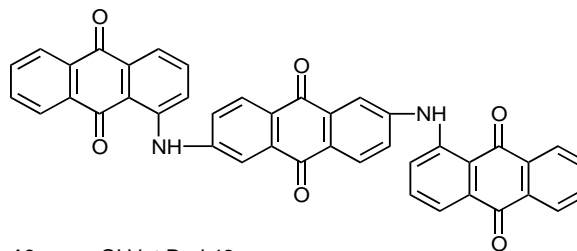


13 CI Disperse Blue 19

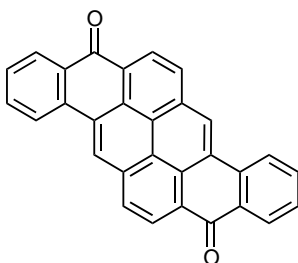
### Vat dyes



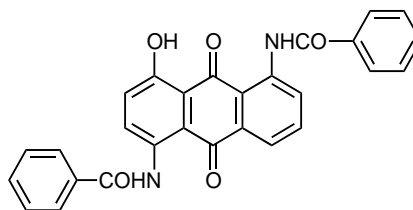
14 CI Vat Yellow 3



16 CI Vat Red 48

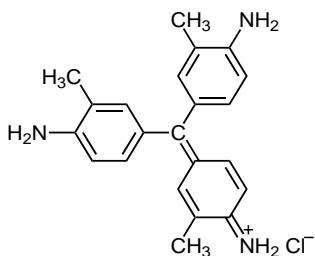


15 CI Vat Orange 9

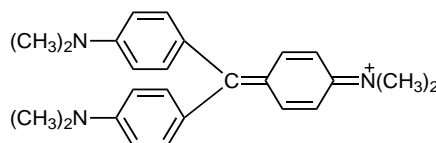


17 CI Vat Violet 15

### Basic dyes

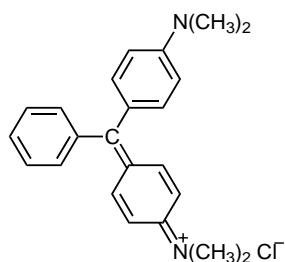


18 CI Basic Violet 2

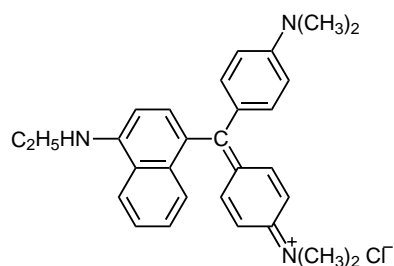


19 CI Basic Violet 3

## A1. SOME EXAMPLES OF COMMERCIAL DYES

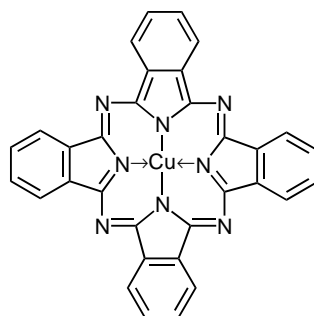


20 CI Basic Blue 1



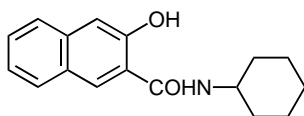
21 CI Basic Blue 11

### Pigments

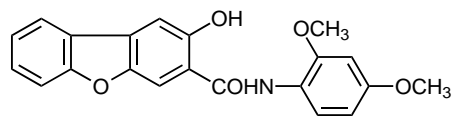


22 CI Pigment Blue 15  
(copper phthalocyanine)

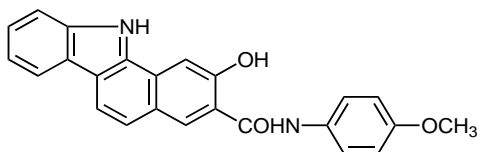
### Azoic coupling components



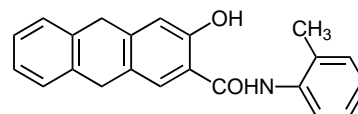
23 CI Azoic Coupling Component 2



25 CI Azoic Coupling Component 16



24 CI Azoic Coupling Component 13

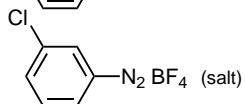
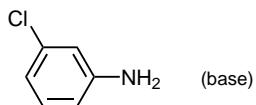


26 CI Azoic Coupling Component 36

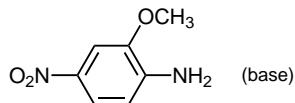
 Contents

 Home

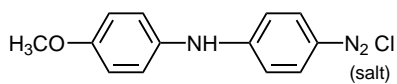
**Diazo components**



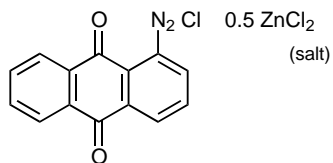
**27** Cl Diazo Component 2



**29** Cl Diazo Component 5



**28** Cl Diazo Component 4



**30** Cl Diazo Component 36

# Generic names of synthetic fibres

Generic name	Chemical constitution	Trade names	Country of origin
Acetate	Cellulose secondary ethanoate (between 74% and 92% cellulose hydroxyl groups ethanoylated)	Albene Celanese Dicel Estron	Germany UK UK USA
Triacetate	Cellulose triethanoate (at least 92% cellulosic hydroxyl groups ethanoylated)	Arnel Tricel Trilan	USA UK Canada
Acrylic	Poly(propenenitrile) (polyacrylonitrile) with small amounts of a comonomer	Courtelle Dralon Leacryl Nitron Orlon 42 (staple)	UK Germany Italy USSR USA
Modacrylic	Poly(propenenitrile) (polyacrylonitrile) containing < 85% but > 50% of propenenitrile by mass	BHS Creslan Lycra PAN Teklan	UK USA Germany UK
Cupro	Cellulose (regenerated from cellulose dissolved in cuprammonium hydroxide)	Bemberg Cuprama	Germany
Modal	Cellulose (regenerated, made by high-wet-modulus process)	Vincel Hypolan	UK Japan
Viscose	Cellulose (regenerated by the viscose process)	Fibro Sarille Tenasco	UK UK UK



Contents



Home

## COLOUR FOR TEXTILES: A USER'S HANDBOOK

Generic name	Chemical constitution	Trade names	Country of origin
Nylon	Polyamide Nylon 6.6 (stretch nylon)	Astron	USA
		Ban-Lon	USA
	Nylon 6	BriNylon	UK
		Akulon	Holland
		Amilen	Japan
		Carpolan	USA
		Enkalon	USA
		Grillon	Japan
		Perlon	Germany
		Rislan	France
Polyester	Poly(ethylene terephthalate)	Crimplene	UK
		Dacron	USA
		Enkalen	Holland
		Lavsan	USSR
		Mylar (clear film)	USA
		Tergal	France
		Terlenka	Holland
		Terylene	UK
		Trevira	Germany
		Polyethylene	Poly(ethene)
Courlene	UK		
Polypropylene	Poly(propene)	Meraklon	Italy
		Monolene	Canada
		Polyfilene	USA
		Prolene	USA
		Ulstron	UK
Chlorofibre	At least 50% by mass of of poly(vinyl chloride) (poly(chloroethene)) or poly(vinylidene chloride) (poly(1,1-dichloroethene))	Rhovyl Saran Tygan	France USA UK



**Contents**



**Home**

*Left from top:*  
 indigo  
 indigo  
 cochineal/alum  
 cochineal/copper  
 indigo and weld  
 weld  
 quercitron bark  
 alder bark/iron/indigo  
 madder/alum  
 madder/alum  
 cochineal/tin  
 cochineal/tin



*Right from top:*  
 woad  
 Ochrolechia tartarea/alkali  
 Ochrolechia tartarea/acid  
 Ochrolechia tartarea  
 Xanthoria parietina (photo-oxidised)  
 elder leaves/iron  
 hedge mustard/alum  
 crab apple leaves/alum  
 Parmelia saxatilis  
 alder bark/iron  
 lady's bedstraw/tin  
 lady's bedstraw/alum

**Plate 1** Some natural dyes on wool



**Plate 2** Standards for assessment of fading in light fastness testing



		Fastness Properties												
Test Depth 1/3 I.S.O.		[1] Daylight				[2] Washing				[27] Dyeing Methods	Test Depth 1/3 I.S.O.			
Test Depth 1/1 I.S.O.		ISO Std. Depth				ISO No. 2		ISO No. 3			I.S.O. Standard Depths			
		1	1	1	2	Effect	Stain	Effect	Stain		1/25	1/3	1/1	2/1
Acid Milling Dyes		(a)	(b)	(c)	(d)	(e)	(f)	(g)	(h)					
<b>Coomassie Milling Scarlet G 150</b> C.I. Acid Red 97		2-3	3	3	3-4	4	5 (w) 5 (c)	3	4 (w) 4-5 (c)	0-015%	0-13%	0-4%	0-70%	
<b>Coomassie Fast Scarlet BS</b> C.I. Acid Red 111		3	3-4	4-5	5	4	5 (w) 5 (c)	4 WY	4-5 (w) 5 (c)	0-03%	0-3%	1-0%	2-2%	
<b>Coomassie Red PG 150</b> C.I. Acid Red 85		3	3-4	4	4-5	4	5 (w) 4 (c)	3 WD	4-5 (w) 3-4 (c)	0-02%	0-18%	0-55%	1-1%	
<b>Coomassie Red PR</b>		3	3-4	4	4	4	5 (w) 4 (c)	3 4	4-5 (w) 3-4 (c)	0-033%	0-3%	0-9%	1-8%	
<b>Carbolan Crimson BS</b> C.I. Acid Red 138		2-3	3	3-4	4	4-5	5 (w) 5 (c)	3-4	4-5 (w) 5 (c)	0-03%	0-25%	0-75%	1-5%	
<b>Carbolan Rubine 2B 150</b> C.I. Acid Red 129		3	3-4	4-5	5	4-5	5 (w) (c)	4	4-5 (w) 4-5 (c)	0-025%	0-25%	0-75%	1-7%	
<b>Coomassie Bordeaux BS</b> C.I. Acid Red 134		3	4	4-5	5	5	5 (w) 5 (c)	4 BI	4-5 (w) 4-5 (c)	0-03%	0-2%	0-65%	1-5%	

Plate 3 A typical shade card for acid dyes



Plate 4 Harris tweed fabric, frayed out to show the differently coloured component fibres of each yarn



Plate 5 'Photographic' printing permits subtle tone gradation

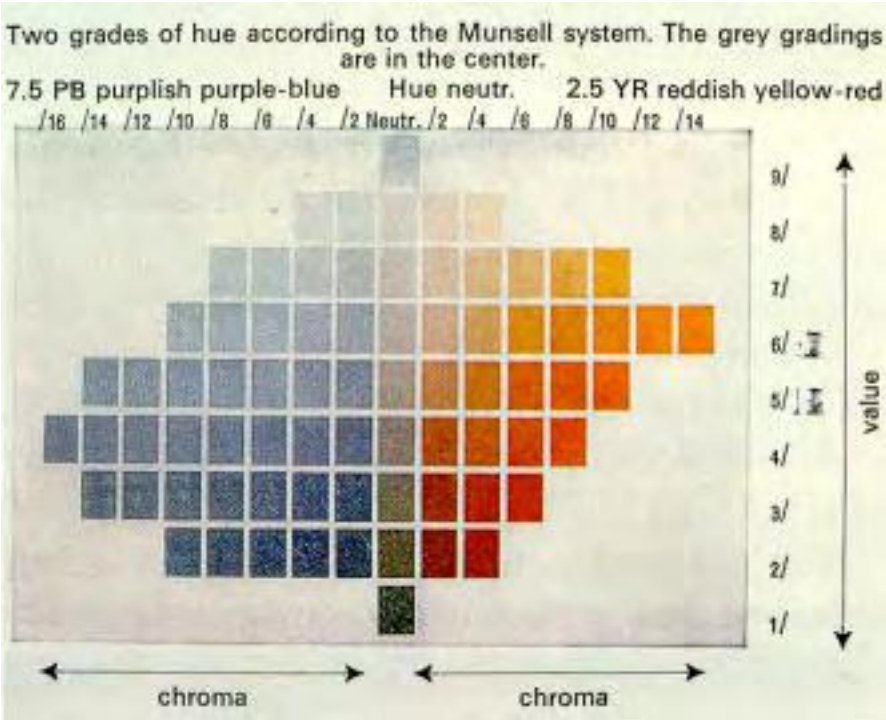
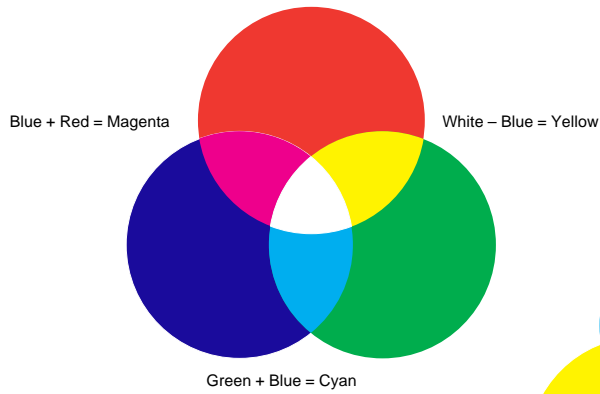
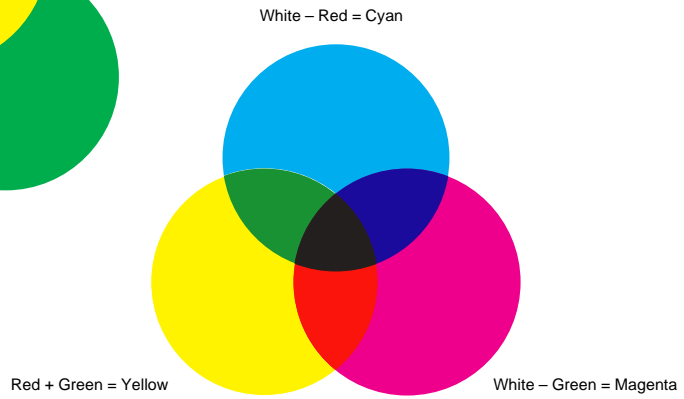


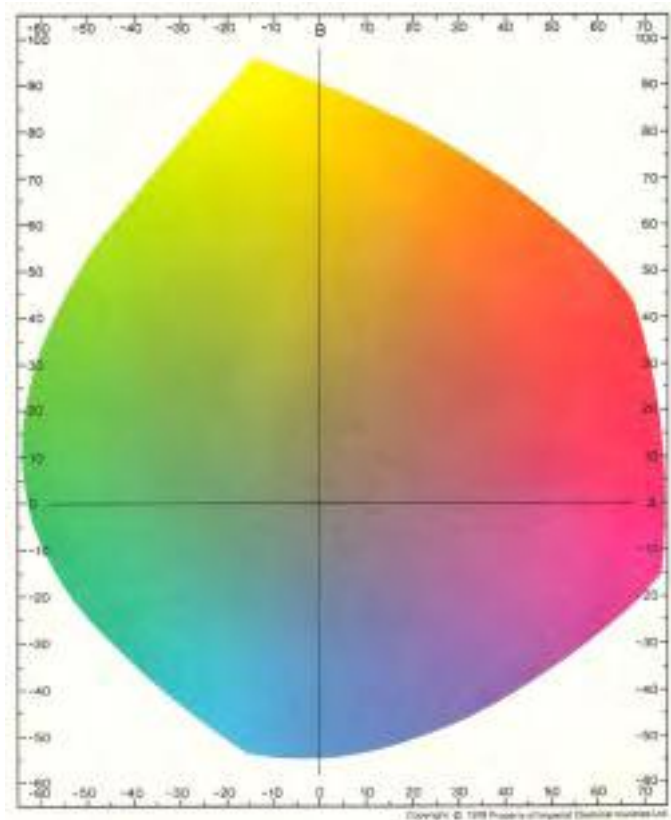
Plate 6 A page from a colour atlas, The Munsell dictionary of colour



**Plate 7** Colour mixing – additive



**Plate 8** Colour mixing – subtractive



**Plate 9** CIE 1976 colour map (courtesy ICI plc)